

Optometric Quarterly 82 – Track 2 – Tear Ferning (with Christine Purslow and Helen Tilley)

Below are two images relating to the Tear Ferning interview which you may find helpful.

Image 1 shows normal ferning of human tear fluid (magnification 20x). Allowing tear fluid to dry on a glass microscope slide for ten minutes produces this stunning pattern, which in this case indicates normal electrolyte composition of the tears.

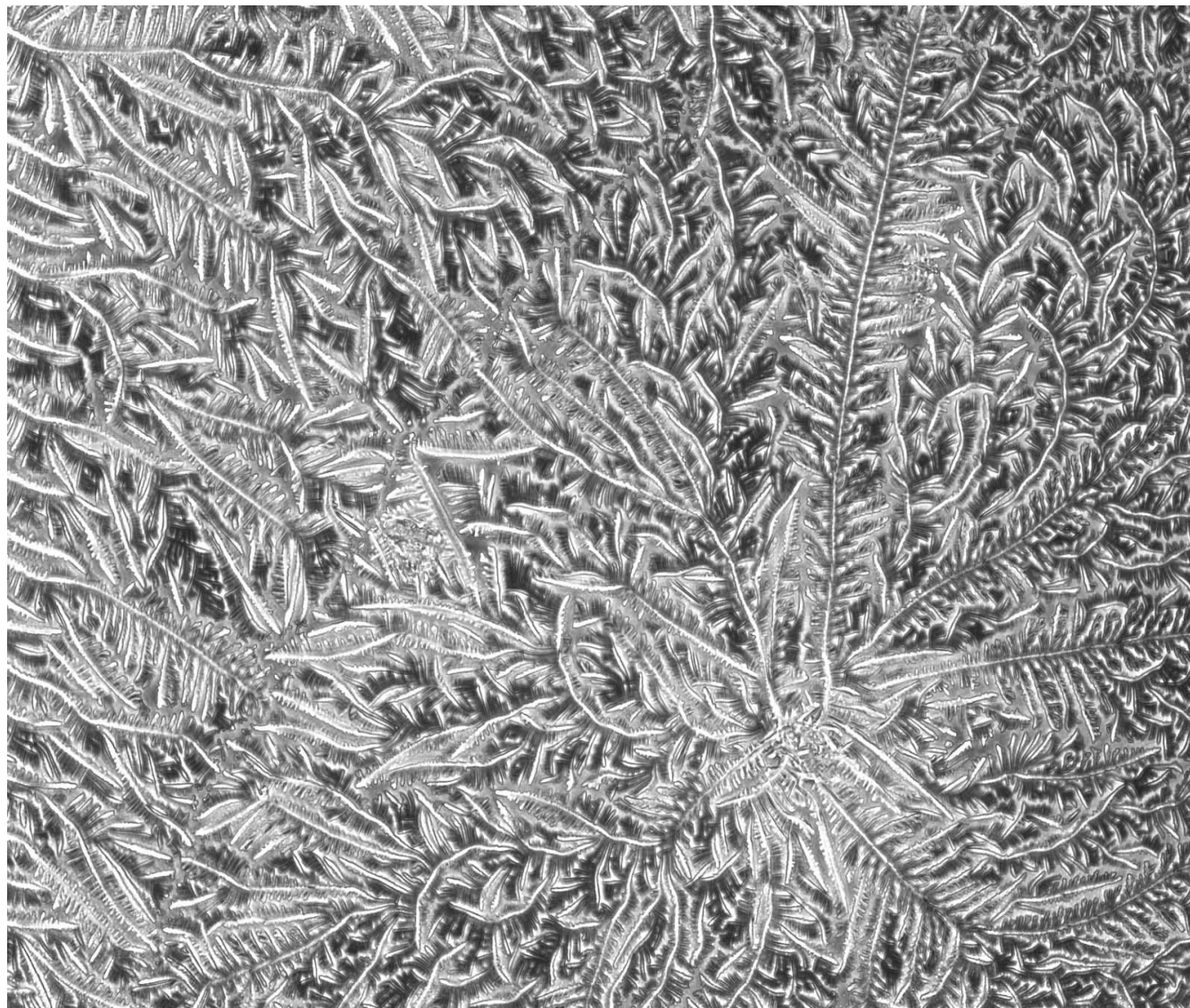


Image 1

Image 2 shows the Rolando grading scale referred to in the tear ferning interview – Types 1 and 2 are considered normal and Types 3 and 4 are what would commonly be seen with dry eye or an intolerant contact lens wearer.

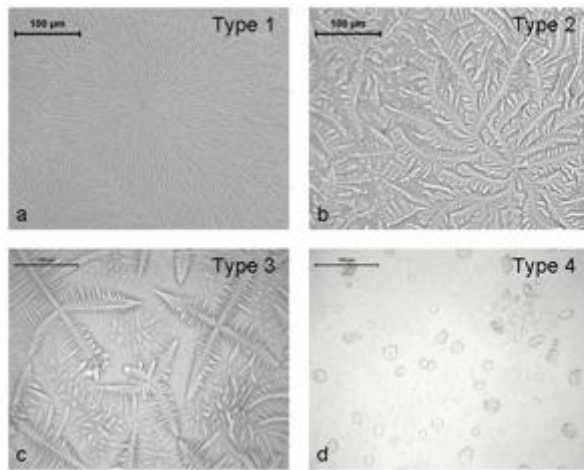


Image 2

Images courtesy of Christine Purslow